

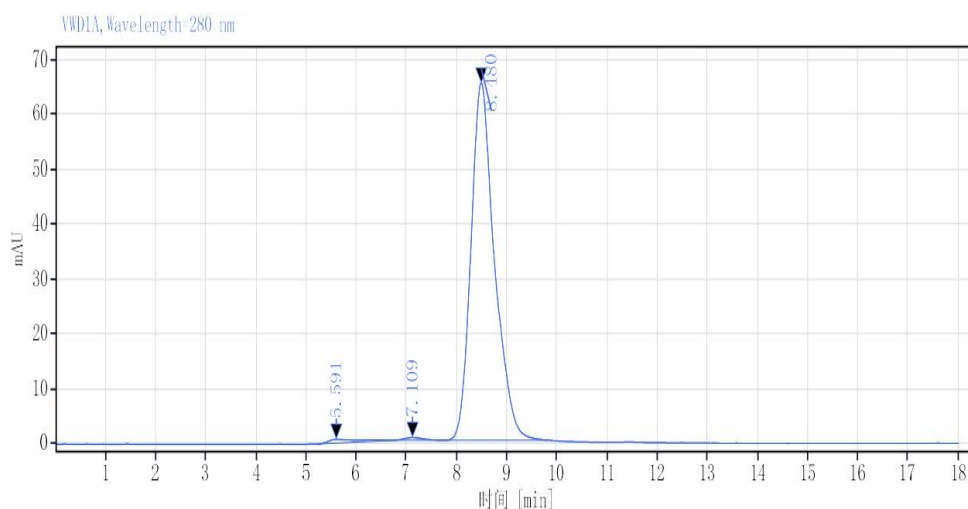
BSA Monoclonal antibody, Rabbit mAb

Cat.No: DTB06

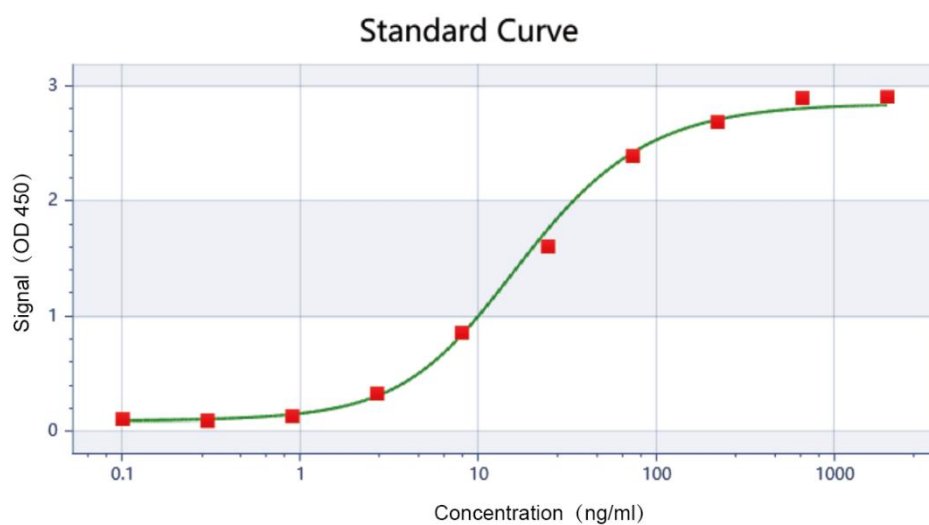
DESCRIPTION

Gene Name Synonym	Bovine Serum albumin antibody; BSA antibody; allergen Bos d 6 antibody
Purity	≥ 95% as determined by HPLC
Conjugate	Unconjugated
Host / Isotype	Rabbit / IgG
Clonality	Monoclonal Antibody
Storage Buffer	PBS, PH:7.4
Form	Liquid
Applications	WB / ELISA
Recommended Dilutions	WB: 1 : 2500-1 : 5000 ELISA: 1 : 5000-1 : 20000
Stability & Storage	Store at -20°C. Stable for one year after shipment. Aliquoting is unnecessary for -20°C storage. Avoid repeated freeze-thaw cycles.
Background	BSA is a protein commonly used as a standard in various biochemical applications, including enzyme assays, protein quantification, and electrophoresis. BSA is also used in cell culture media, diagnostic tests, and as a stabilizing agent for biomolecules.

HPLC



ELISA



	BSA Monoclonal antibody
EC50	4.599 ng/ml

感谢您选择德泰生物，我们竭诚为您服务！

For Research Use Only