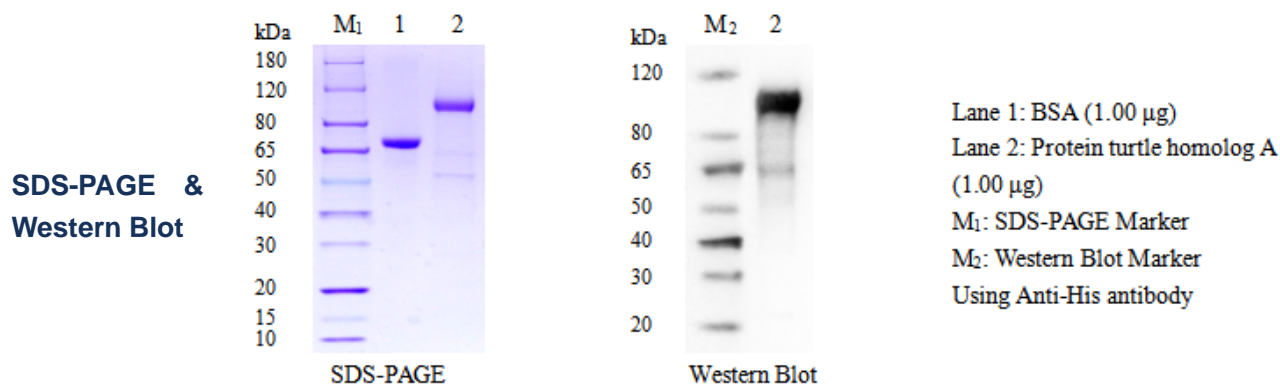


Protein turtle homolog A

Cat.No:DTD0053

DESCRIPTION

Name	Protein turtle homolog A
Purification	The soluble target protein turtle homolog A was derived from secreted expression and obtained by affinity chromatography purification
Protein Concentration	At 0.300 mg/ml, BSA was used as the standard and the protein concentration was determined by BCA
Molecular weight	77 kDa
Purity	>85% by SDS-PAGE
Species	Human
Physical Appearance	Liquid
Buffer	1×PBS, pH7.4
Stability & Storage	For long term use, aliquot and store at -80°C (avoiding multiple freeze-thaws)



Thank you for choosing Detai Biological. We are dedicated to serving you!

For Research Use Only