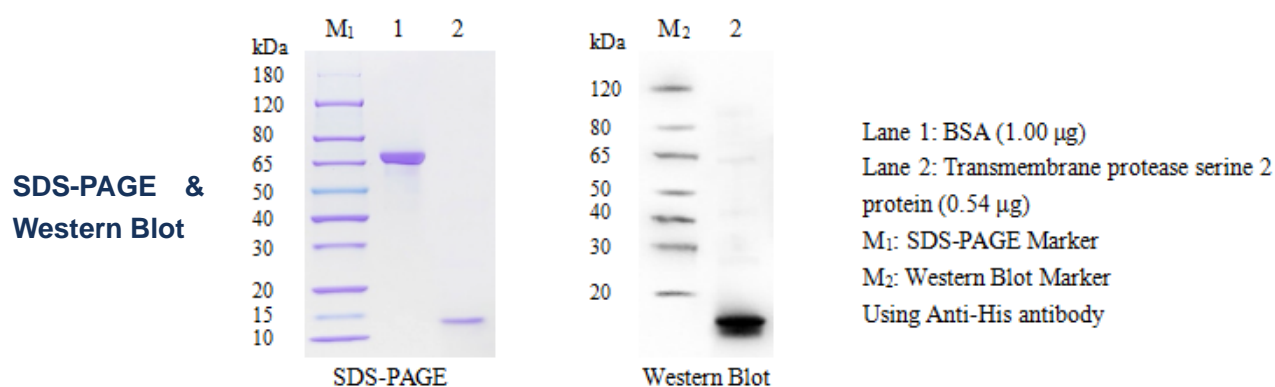


Transmembrane protease serine 2 Protein

Cat.No:DTD0087

DESCRIPTION

Name	Transmembrane protease serine 2 protein
Purification	The soluble target protein ransmembrane protease serine 2 was derived from intracellular expression and obtained by affinity chromatography purification
Protein Concentration	At 0.270 mg/ml, BSA was used as the standard and the protein concentration was determined by BCA
Molecular weight	12 kDa
Purity	>90% by SDS-PAGE
Expression System	HEK293
Species	Human
endotoxin:	<10EU / mg, as determined by a gel-based endotoxin detection kit
Physical Appearance	Liquid
Buffer	1×PBS, pH7.4
Stability & Storage	For long term use, aliquot and store at -80°C (avoiding multiple freeze-thaws)



Thank you for choosing Detai Biological. We are dedicated to serving you!
For Research Use Only