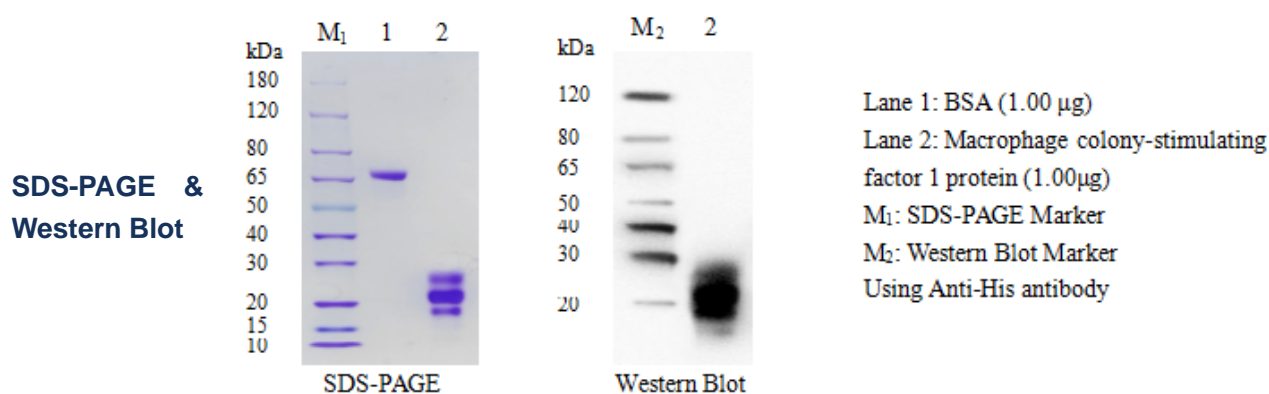


Macrophage colony-stimulating factor 1 Protein

Cat.No:DTD0095

DESCRIPTION

Name	Macrophage colony-stimulating factor 1 protein
Purification	The soluble target protein Macrophage colony-stimulating factor 1 was derived from secreted expression and obtained by affinity chromatography purification
Protein Concentration	At 1.000 mg/ml, BSA was used as the standard and the protein concentration was determined by BCA
Molecular weight	19 kDa
Purity	>85% by SDS-PAGE
Expression System	HEK293
Species	Human
endotoxin:	<1EU / μ g, as determined by the gel method endotoxin detection kit
Physical Appearance	Liquid
Buffer	1 \times PBS, pH7.4
Stability & Storage	For long term use, aliquot and store at -80°C (avoiding multiple freeze-thaws)



Thank you for choosing Detai Biological. We are dedicated to serving you!

For Research Use Only