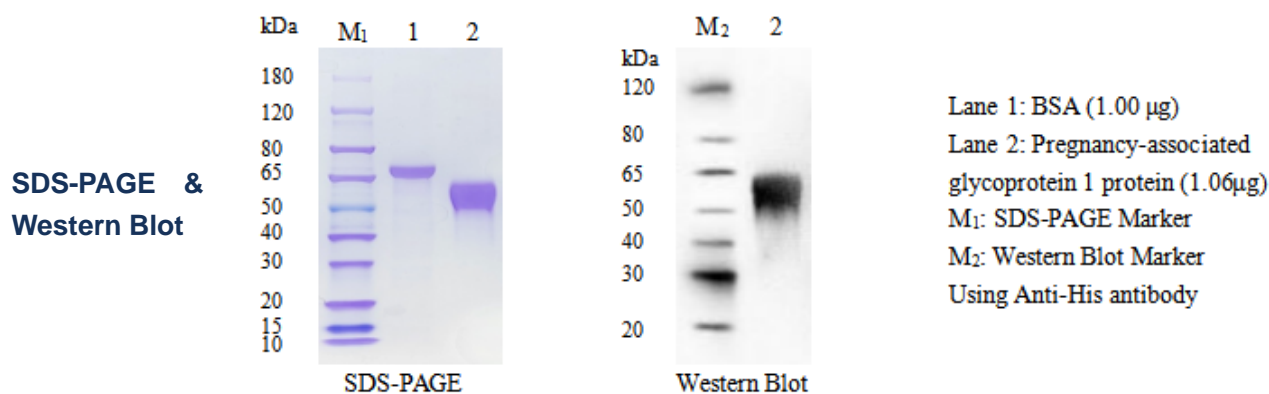


# Pregnancy-associated glycoprotein 1 Protein

Cat.No:DTD0109

## DESCRIPTION

<b>Name</b>	Pregnancy-associated glycoprotein 1 protein
<b>Purification</b>	The soluble target protein Pregnancy-associated glycoprotein 1 was derived from secreted expression and obtained by affinity chromatography purification
<b>Protein Concentration</b>	At 0.530 mg/ml, BSA was used as the standard and the protein concentration was determined by BCA
<b>Molecular weight</b>	41 kDa
<b>Purity</b>	>90% by SDS-PAGE
<b>Species</b>	Bovine
<b>Expression System</b>	HEK293
<b>Physical Appearance</b>	Liquid
<b>Buffer</b>	1×PBS, pH7.4
<b>Stability &amp; Storage</b>	For long term use, aliquot and store at -80°C (avoiding multiple freeze-thaws)



**Thank you for choosing Detai Biological. We are dedicated to serving you!**  
**For Research Use Only**