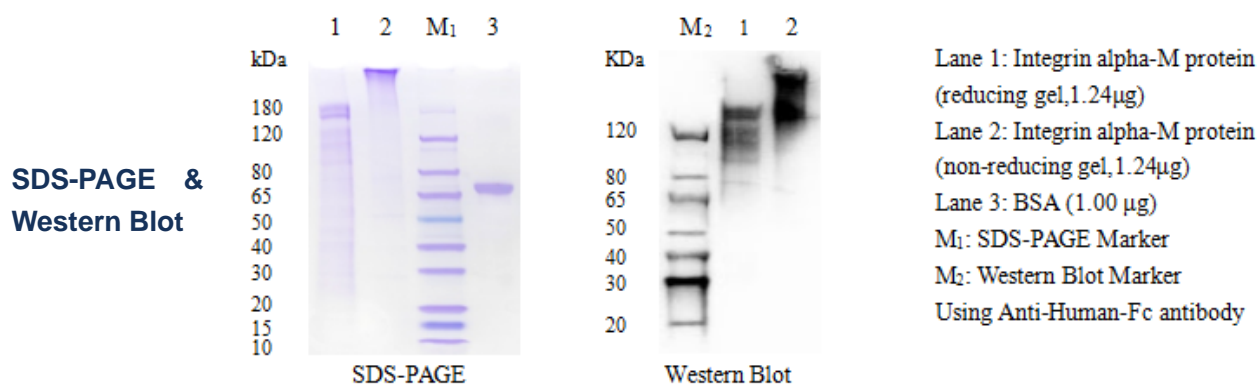


Integrin alpha-M Protein

Cat.No:DTD0110

DESCRIPTION

Name	Integrin alpha-M protein
Purification	The soluble target protein Integrin alpha-M was derived from secreted expression and obtained by affinity chromatography purification
Protein Concentration	At 0.310 mg/ml, BSA was used as the standard and the protein concentration was determined by BCA
Molecular weight	147 kDa
Purity	>85% by SDS-PAGE
Species	Human
Expression System	ExpiCHO
Physical Appearance	Liquid
Buffer	1xPBS, 5 % Glycerol, pH7.4
Stability & Storage	For long term use, aliquot and store at -80°C (avoiding multiple freeze-thaws)



Thank you for choosing Detai Biological. We are dedicated to serving you!
For Research Use Only