

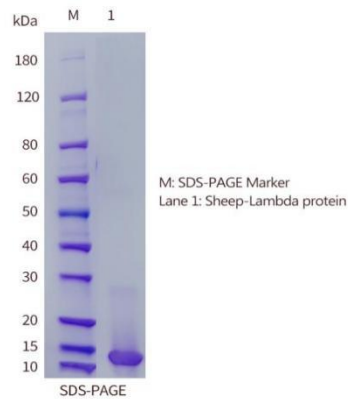
Sheep Lambda Protein

Cat.No: DTL03

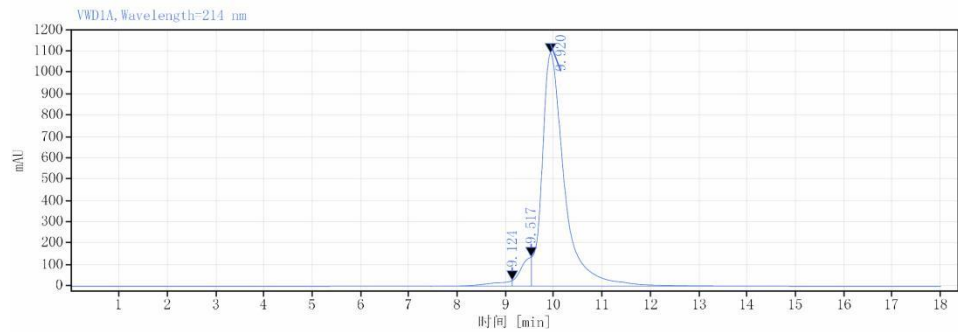
DESCRIPTION

Name	Sheep Lambda Protein
Describe	Integrating HIS tags to express in eukaryotic systems
Purity	>90%as determined by HPLC
Expressing Host	293 Cells
Species	Sheep
molecular weight	13kDa
Buffer solution	500mM NaCl,2.6mM KCl,10mM Na ₂ HPO ₄ ·12H ₂ O,1.7mM KH ₂ PO ₄ ,5%Sucrose PH:7.4
Stability & Storage	-80 ℃ packaging and storage to avoid repeated freezing and thawing

SDS-PAGE



HPLC



信号:	VWD1A, Wavelength=214 nm						名称
保留时间 [min]	类型	峰宽 [min]	峰面积	峰高	峰面积%		
9.920	MB m	5.24	35230.12	1091.73	92.79		Sheep Lambda Protein

Background

Immunoglobulin monomers consist of two heavy chains and two light chains, connected by disulfide bonds. The variable regions of the heavy and light chains together form antigenic determinants. Therefore, the specificity of antibodies is determined by both heavy and light chains. Different subtypes of antibodies have structural differences, and their immunogenicity and in vivo effects vary. Further subdivision and subtype identification of antibodies are of great significance for the study of disease mechanisms and the development of antibody drugs. Among them, light chains are divided into two categories: Kappa and Lambda, with a normal ratio of about 2:1 in the human body. Nearly 40% of light chains in the normal human body are unable to bind with heavy chains every day and are in a free state, known as free light chain (FLC).

FLC is a natural product of B lymphocytes and therefore a unique biomarker for tumors and reactive B cell related diseases. The increase of FLC is associated with malignant plasma imbalance and other lymph node immunoproliferative diseases. Meanwhile, FLC testing is also an important diagnostic aid for various monoclonal globulin diseases. Accurately measuring monoclonal free light chains in serum and urine is particularly important in light chain diseases.

感谢您选择德泰生物，我们竭诚为您服务！

For Research Use Only