

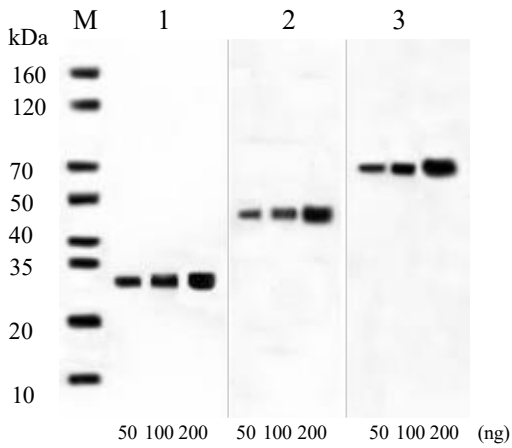
# His-Tag Mouse Monoclonal Antibody

Cat. No: DTH01

## DESCRIPTION

<b>Product Name</b>	His-Tag Mouse Monoclonal Antibody
<b>Host Species</b>	Mouse
<b>Ig class</b>	Immunogen-specific mouse IgG1
<b>Purification</b>	>95% Protein A purified
<b>Applications</b>	WB / ELISA / IF / IP
<b>Specificity</b>	His-Tag Mouse Monoclonal antibody detects endogenous levels of internal, C-terminal, or N-terminal His-tagged proteins.
<b>Storage Buffer</b>	PBS, pH 7.4
<b>Storage</b>	For up to 12 months at -20°C or lower, After receive, the antibody should be divided into the right amount. Avoid repeated freezing and thawing cycles
<b>Recommended Dilutions</b>	WB: 1 :2500-1 :5000 ELISA: 1 :2500-1 :10000 IF: 1 :500

## APPLICATION



Western Blot analysis of HHHHHH tagged-fusion protein

Lane 1: C-His fusion protein

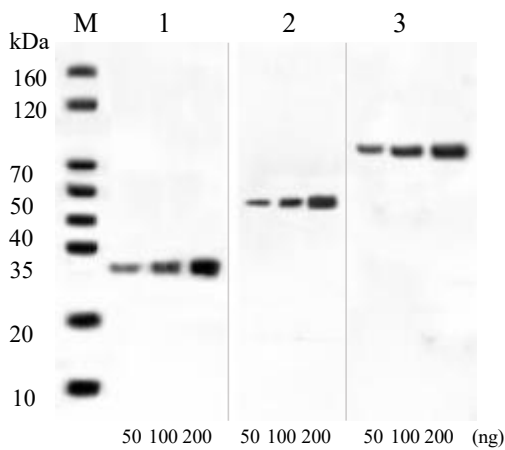
Lane 2: N-His fusion protein

Lane 3: Internal-His fusion protein

M: Molecular weight markers

Using His-Tag Mouse Monoclonal Antibody

(Dilute Proportion: 1 :3000)



Western Blot analysis of HHHHHH tagged-fusion protein

Lane 1: C-His fusion protein

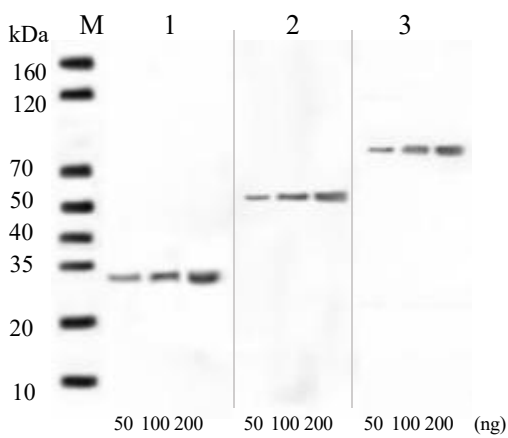
Lane 2: N-His fusion protein

Lane 3: Internal-His fusion protein

M: Molecular weight markers

Using His-Tag Mouse Monoclonal Antibody

(Dilute Proportion: 1 :5000)



Western Blot analysis of HHHHHH tagged-fusion protein

Lane 1: C-His fusion protein

Lane 2: N-His fusion protein

Lane 3: Internal-His fusion protein

M: Molecular weight markers

Using His-Tag Mouse Monoclonal Antibody

(Dilute Proportion: 1 :15000)