

Mouse IgG1 CH23 Protein

Cat.No:DTP02

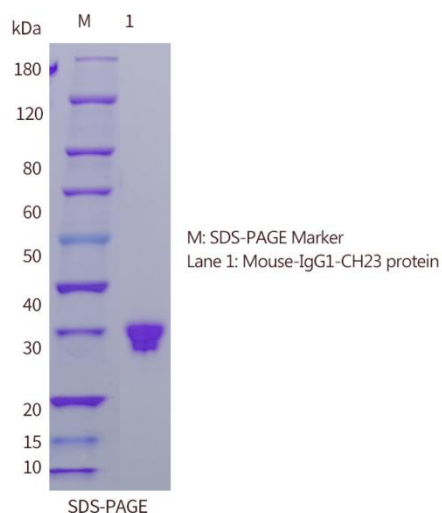
DESCRIPTION

Name	Mouse IgG1 CH23 Protein
Describe	Integrating HIS tags to express in eukaryotic systems
Purity	>90%as determined by SDS-PAGE&HPLC
Expressing Host	293 Cells
Species	Mouse
molecular weight	30kDa
Buffer solution	PBS
Stability & Storage	-80 °C packaging and storage to avoid repeated freezing and thawing

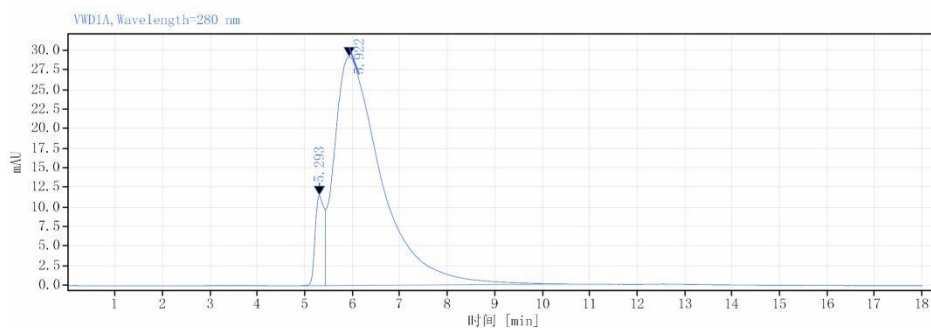
Background

As a monomeric immunoglobulin that is predominately involved in the secondary antibody response and the only isotype that can pass through the human placenta, Immunoglobulin G (IgG) is synthesized and secreted by plasma B cells, and constitutes 75% of serum immunoglobulins in humans. IgG antibodies protect the body against the pathogens by agglutination and immobilization, complement activation, toxin neutralization, as well as antibody-dependent cell-mediated cytotoxicity (ADCC). IgG tetramer contains two heavy chains (5 kDa) and two light chains (25 kDa) linked by disulfide bonds, that is the two identical halves form the Y-like shape. IgG is digested by pepsin proteolysis into Fab fragment (antigen-binding fragment) and Fc fragment ("crystallizable" fragment). IgG1 is most abundant in serum among the four IgG subclasses (IgG1, 2, 3 and 4) and binds to Fc receptors (FcγR) on phagocytic cells with high affinity. Fc fragment is demonstrated to mediate phagocytosis, trigger inflammation, and target Ig to particular tissues. Protein G or Protein A on the surface of certain Staphylococcal and Streptococcal strains specifically binds with the Fc region of IgGs, and has numerous applications in biotechnology as a reagent for affinity purification. Recombinant IgG Fc Region is suggested to represent a potential anti-inflammatory drug for treatment of human autoimmune diseases.

SDS-PAGE



HPLC



保留时间 [min]	类型	峰宽 [min]	峰面积	峰高	峰面积%	名称
5.922	VB	5.00	2002.66	29.22	93.02	Mouse-IgG1-CH23

Thank you for choosing Detai Biological. We are dedicated to serving you!
For Research Use Only