

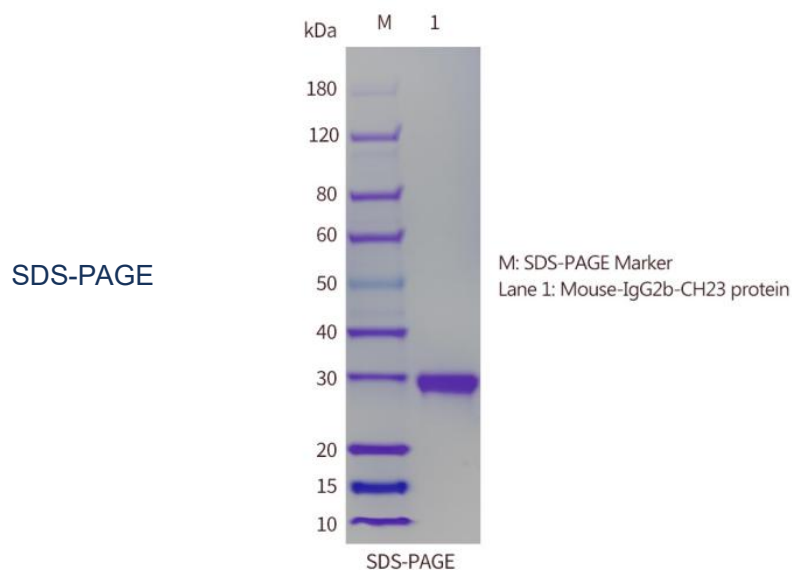
# Mouse IgG2b CH23 Protein

Cat.No:DTP0158

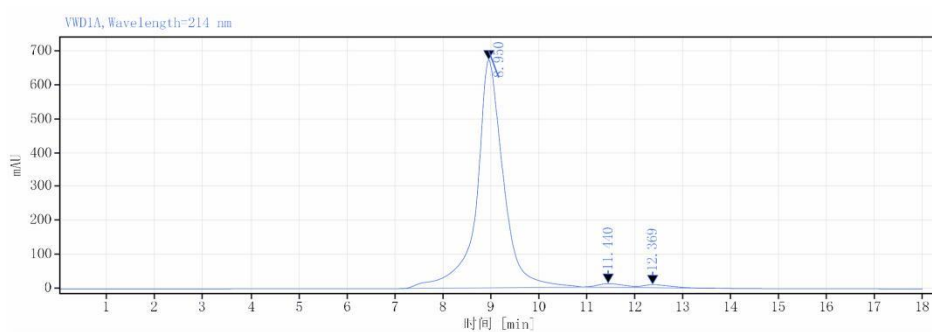
## DESCRIPTION

Name	Mouse IgG2b CH23 Protein
Describe	Integrating HIS tags to express in eukaryotic systems
Purity	>95%as determined by SDS-PAGE&HPLC
Expressing Host	293 Cells
Species	Mouse
molecular weight	30kDa
Buffer solution	1*PBS, PH:7.4
Stability & Storage	-80 °C packaging and storage to avoid repeated freezing and thawing

**Background** Mouse IgG2b CH23 is a subtype of immunoglobulin G (IgG) antibody produced by B cells in response to an antigen. It is the third most abundant IgG subtype in the serum and plays a crucial role in the adaptive immune response. Mouse IgG2b is composed of two heavy chains and two light chains and is involved in opsonization, complement activation, and antibody-dependent cell-mediated cytotoxicity (ADCC). It also plays a role in the regulation of immune responses, including the activation of T cells and the inhibition of B cell activation.



HPLC



保留时间 [min]	类型	峰宽 [min]	峰面积	峰高	峰面积%	名称
8.950	MB m	3.78	26130.51	670.65	97.24	mouse IgG2b CH23
11.410						
12.369						

**Thank you for choosing Detai Biological. We are dedicated to serving you!**  
**For Research Use Only**